

# Predicted High Park Fire Flood Response: Poudre Park Area



USDA Natural Resources Conservation Service

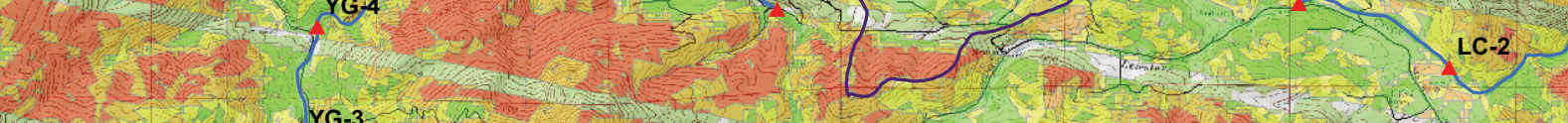
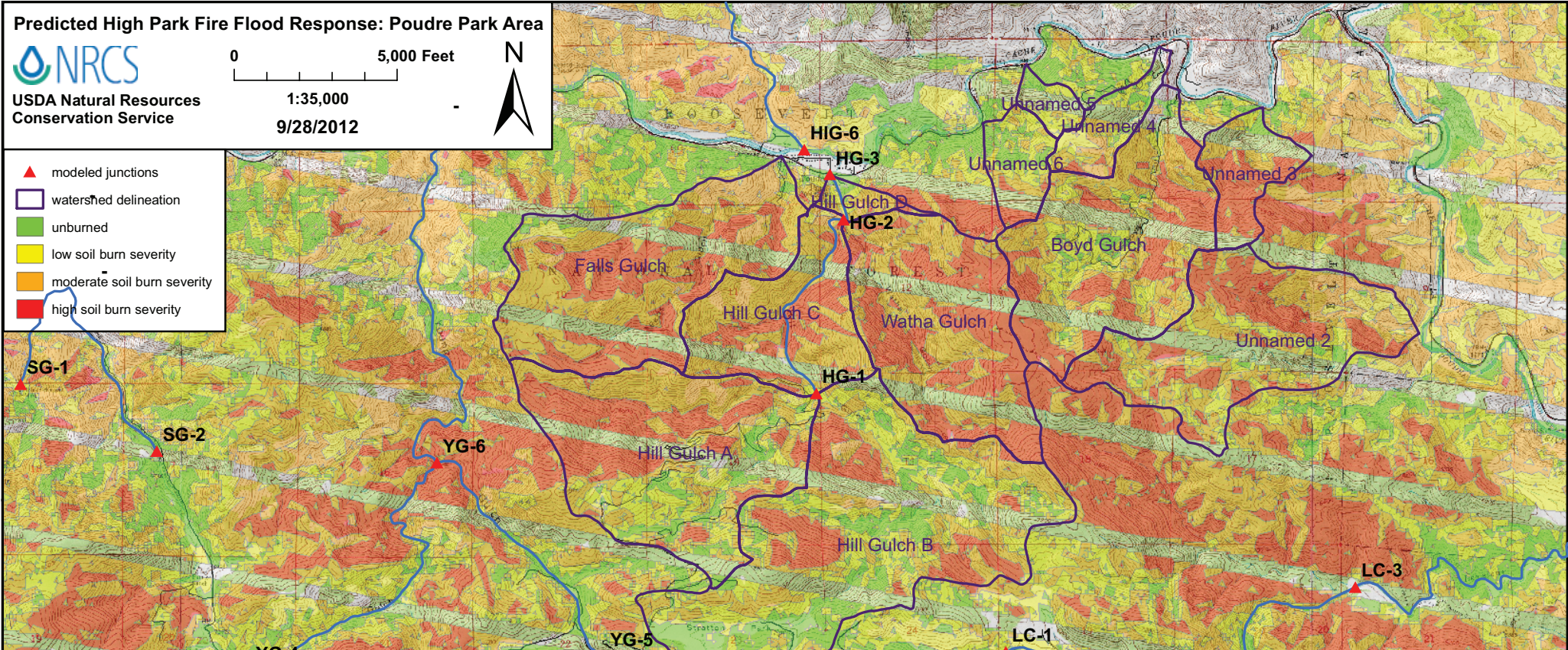
0 5,000 Feet

1:35,000

9/28/2012



- ▲ modeled junctions
- watershed delineation
- unburned
- low soil burn severity
- moderate soil burn severity
- high soil burn severity



Junction or Catchment	Drainage Area (mi <sup>2</sup> )	2-Year Rain Event (0.8 inches)				10-Year Rain Event (1.5 inches)				25-Year Rain Event (1.8 inches)				50-Year Rain Event (2.2 inches)				100-Year Rain Event (2.4 inches)			
		Pre Fire	Post Fire	Peak Flow	Sed. Bulking Flow (cfs)	Pre Fire	Post Fire	Peak Flow	Sed. Bulking Flow (cfs)	Pre Fire	Post Fire	Peak Flow	Sed. Bulking Flow (cfs)	Pre Fire	Post Fire	Peak Flow	Sed. Bulking Flow (cfs)	Pre Fire	Post Fire	Peak Flow	Sed. Bulking Flow (cfs)
Falls Gulch	1.33	6.3	120	20	160	140	550	3.9	680	240	770	3.2	960	390	1100	2.8	1400	480	1300	2.6	1600
Hill Gulch A	1.41	0	59	n/a	74	78	390	5.0	490	150	580	3.8	720	280	880	3.1	1100	360	1000	2.9	1300
Hill Gulch B	2.20	0	34	n/a	37	89	330	3.7	360	180	520	2.9	570	350	820	2.4	900	440	990	2.3	1100
HG-1	3.61	0	88	n/a	110	160	630	4.0	790	320	980	3.1	1200	600	1500	2.5	1900	760	1800	2.4	2300
Watha Gulch	1.12	12	150	12	180	150	580	3.7	720	260	810	3.1	1000	430	1100	2.7	1400	520	1300	2.6	1700
HG-2	5.45	12	200	17	250	290	1100	3.6	1300	560	1700	3.0	2100	990	2600	2.6	3200	1300	3000	2.4	3800
HG-3	5.53	12	200	17	250	300	1100	3.6	1400	560	1700	3.0	2100	990	2600	2.6	3200	1300	3100	2.4	3800
Boyd Gulch	1.22	0.30	76	253	95	97	420	4.3	520	180	610	3.4	760	310	900	2.9	1100	390	1100	2.7	1300
Unnamed 2	1.17	0	63	n/a	79	82	360	4.3	440	150	520	3.5	650	270	770	2.9	960	330	900	2.7	1100
Unnamed 3	0.28	0	28	n/a	35	21	130	6.2	160	42	200	4.6	240	81	290	3.6	360	100	350	3.4	430
Unnamed 4	0.20	0.40	5.8	15	6.4	21	48	2.3	53	38	74	1.9	81	67	120	1.7	130	83	140	1.7	150
Unnamed 5	0.089	0	1.2	n/a	1.3	7.9	17	2.2	19	16	27	1.7	30	29	43	1.5	47	36	51	1.4	56
Unnamed 6	0.21	0	6.2	n/a	6.8	12	55	4.6	61	26	82	3.2	90	52	130	2.5	140	67	160	2.4	170

